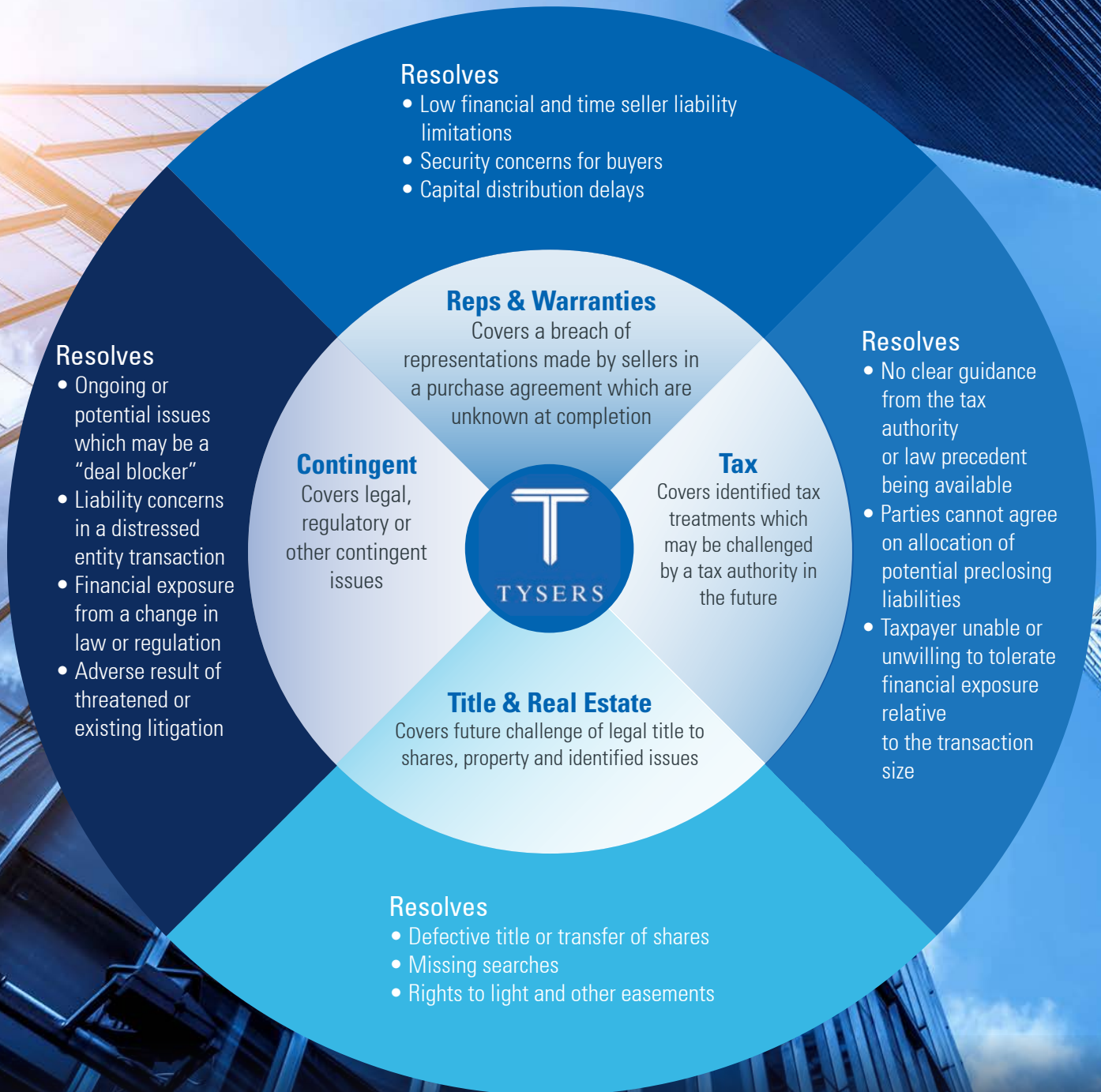


MERGERS & ACQUISITIONS INSURANCE

Tysers offer a range of tailored insurance solutions which help transaction parties and their advisors address risk and provide financial certainty in a variety of M&A scenarios.



About the M&A Insurance team

Transaction parties and their advisors face a variety of challenges that threaten to prevent a deal from completing and by transferring potential or identified liabilities to an Insurer, Tysers can provide financial certainty and facilitate transactions.

- We cater to all industry sectors, working on deals across the world for both buyers and sellers in acquisitions, sales, restructuring, refinancing and investments.
- By listening to our clients and identifying their specific needs, we can quickly develop, negotiate and implement insurance policies that are cost-effective and comprehensive.
- Using our vast industry experience, established long-term relationships with Insurers and extensive claims expertise, we offer a complete intermediary service.

About Tysers

Client satisfaction is paramount to us and our exceptional business retention rates are testament to this. Our servicing teams will develop close working relationships with you, providing expert advice on all aspects of insurance and risk management.

- Founded in 1820 in the City of London, we have withstood the test of time in the insurance broking industry because our clients have always been our priority.
- Tysers employs nearly 850 people who cultivate a nimble and fast-paced environment offering new perspectives and innovative solutions to solve problems.
- As the 6th largest premium producing broker into the Lloyd's Market, we handle in excess of USD 2 billion of annual premiums and our strong long-standing relationships with Insurers enable us to negotiate the very best deals for our clients.

Key Contact

James Wilson
Head of M&A Insurance
james.wilson@tysers.com
T: +44 (0)20 3915 0411
M: +44 (0)7827 990104

*"M&A can be unpredictable,
our insurance solutions
provide certainty"*